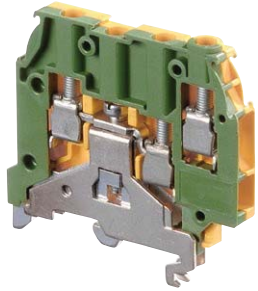
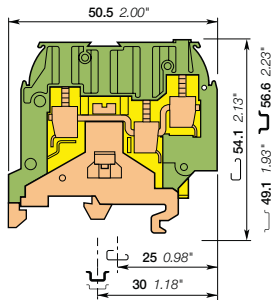


# M4/6.3A.P screw clamp terminal blocks

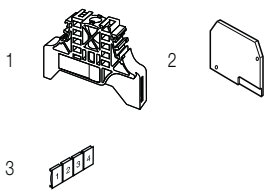
## Ground - 6 mm 0.236 in spacing



M4/6.3A.P



6 mm 0.236 in spacing



### Description

- Reliable electrical and mechanical contact with the rail,
- Flexibility: snap onto symmetrical and asymmetrical rails.

### Ordering details

| Description                  | Color        | Type      | Order code      | Pkg qty | Weight (1 pce) g |
|------------------------------|--------------|-----------|-----------------|---------|------------------|
| Ground Screw rail connection | Green-yellow | M4/6.3A.P | 1SNA195637R1200 | 50      | 22.00            |

### Main technical data

| Connecting capacity                     |                                 |                        | IEC               | UL | CSA       | Mounting instructions      |   |
|---|---------------------------------|------------------------|-------------------|----|-----------|----------------------------|---|
| 1 conductor per clamp                   | Rigid - Solid / Stranded        | 0.2-4 mm <sup>2</sup>  |                   |    | 24-12 AWG | Rail                       | G32, TH 35-7.5, TH 35-15                |
|   | Flexible with insulated ferrule | 0.22-4 mm <sup>2</sup> |                   |    |           | Wire stripping length      | 9.5 mm<br>0.37 in                       |
|   | Gauge                           | A4                     |                   |    |           | Screw clamp Tool           | Flat screwdriver<br>Ø 4 mm<br>Ø 0.16 in |
| Rated cross section                     |                                 |                        | 4 mm <sup>2</sup> |    | 12 AWG    | Torque                     | 0.5 - 0.8 N.m<br>4.4 - 7.1 lb.in        |
| Rated short-time withstand current (1s) |                                 |                        | 480 A             |    |           | Rail connection screw Tool | Flat screwdriver<br>Ø 4 mm<br>Ø 0.16 in |
|   |                                 |                        |                   |    |           | Torque                     | 0.8 N.m<br>7 lb.in                      |

The connecting capacity data for one Rigid - Solid / Stranded - Flexible conductor (when applicable) is a mandatory information required by IEC, UL and CSA standards. All other data are provided as supplementary information only. For more details, please consult our CB, UL or CSA certificates and technical datasheet available on <http://www.abb.com>

|    |      |     |        |  |  |  |  |
|----|------|-----|--------|--|--|--|--|
| CE | RoHS | CSA | Gost R |  |  |  |  |
|----|------|-----|--------|--|--|--|--|

### Accessories

| Description              | Color | Type  | Order code      | Pkg qty | Weight (1 pce) g |
|--------------------------|-------|-------|-----------------|---------|------------------|
| 1 End stops              | Grey  | BAM2  | 1SNA206351R1600 | 50      | 12.00            |
|                          |       | BADL  | 1SNA399903R0200 | 50      | 4.70             |
| 2 End sections           | Grey  | FEM3A | 1SNA116576R1500 | 20      | 3.30             |
| 3 Terminal block markers | White | RC610 | 1SNA233000R0100 | 1       | 7.50             |

Complete list of accessories is indicated in the terminal block datasheet. Some accessories such as jumper bars may modify the terminal block's ratings: complete information in the accessories catalogue pages.